



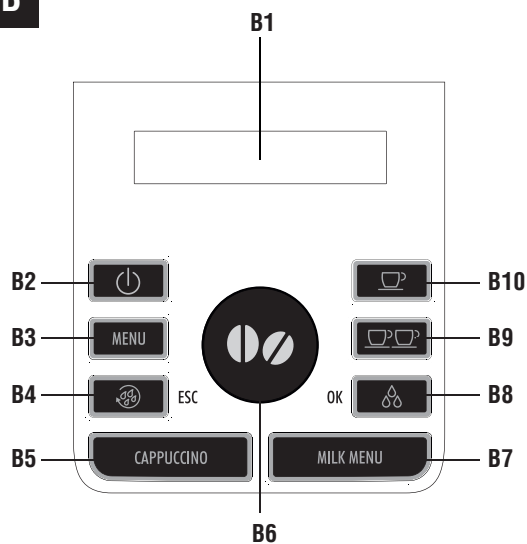
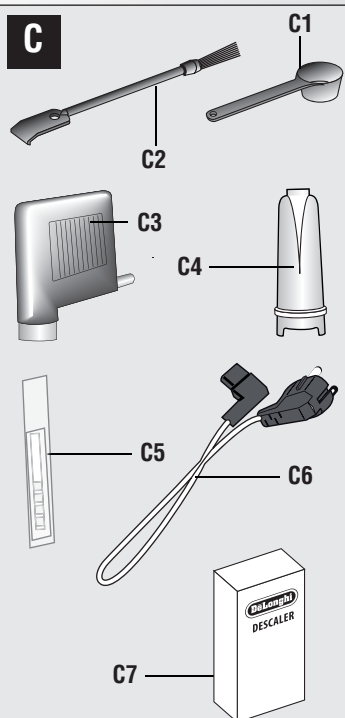
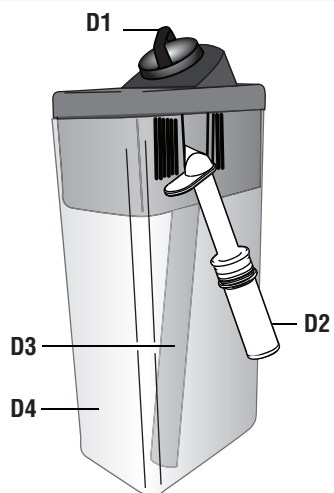
De'Longhi Appliances  
via Seitz, 47  
31100 Treviso Italia

# **BEAN TO CUP ESPRESSO AND CAPPUCCINO MACHINE**

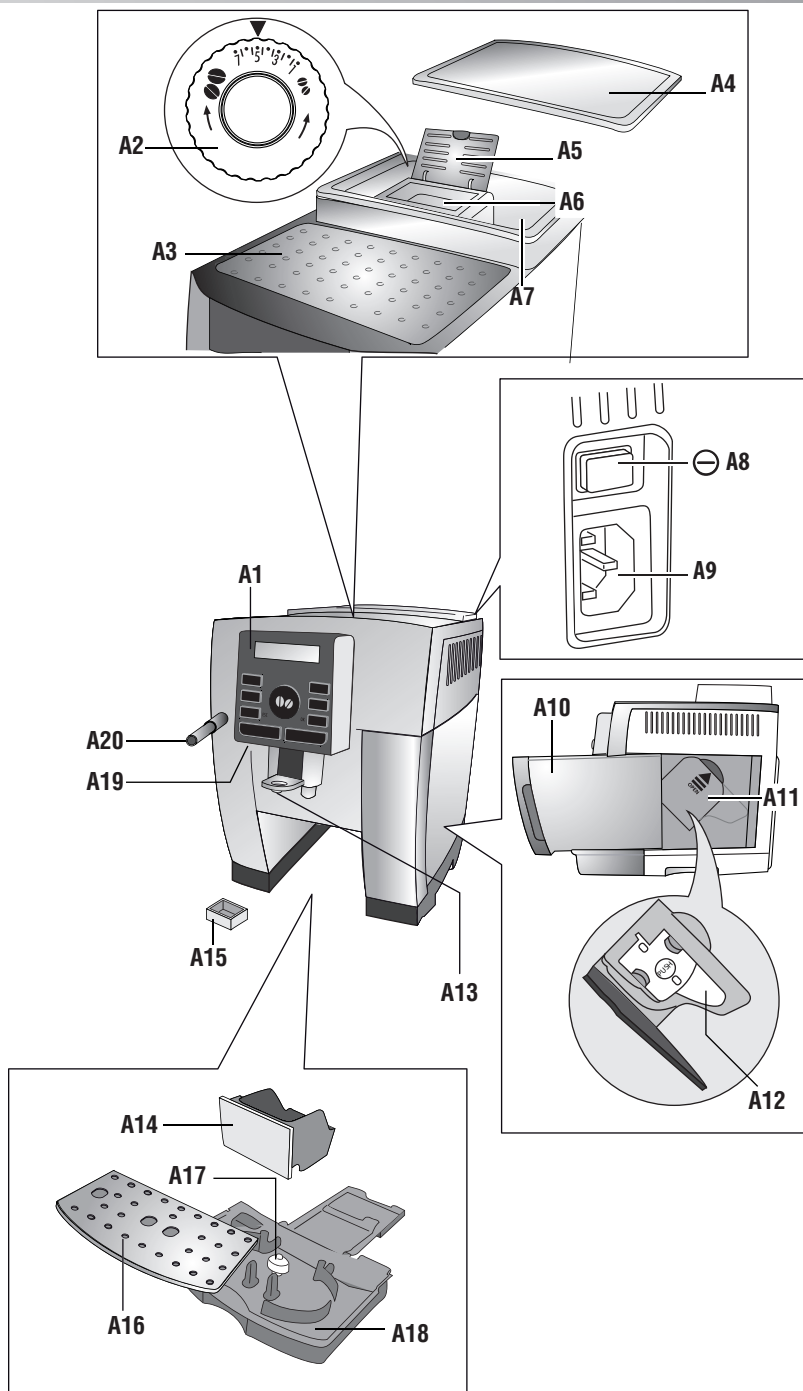
**Instruction for use**

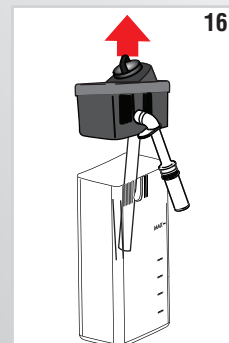
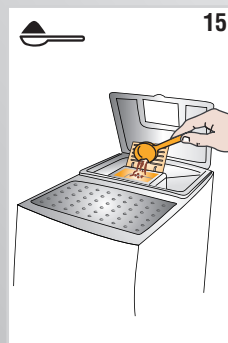
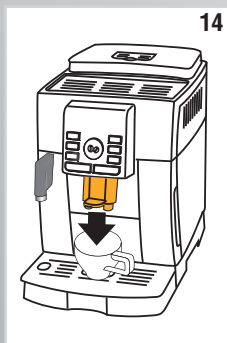
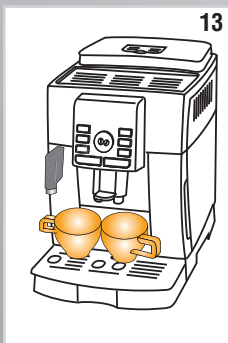
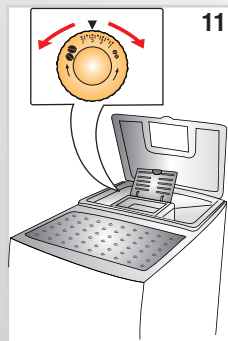
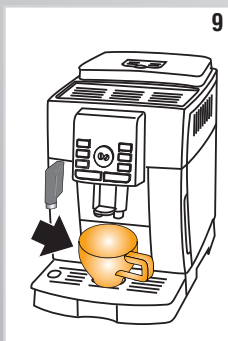
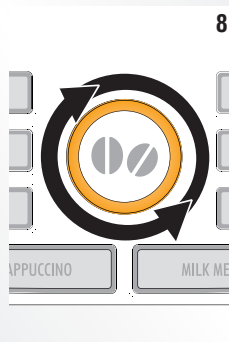
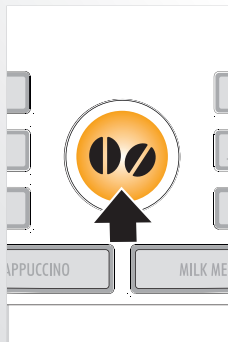
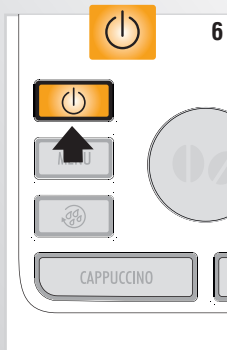
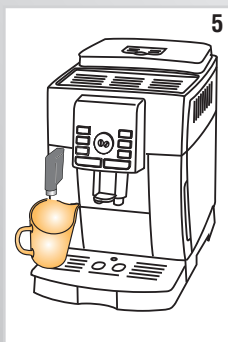
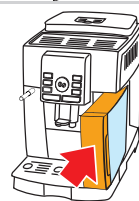
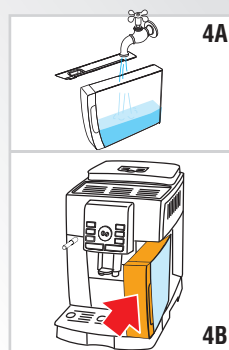
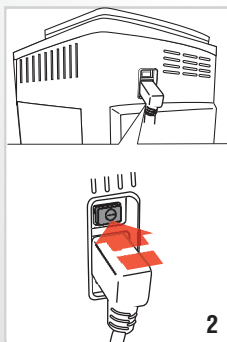
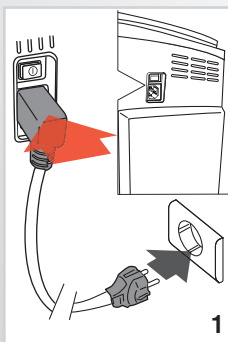


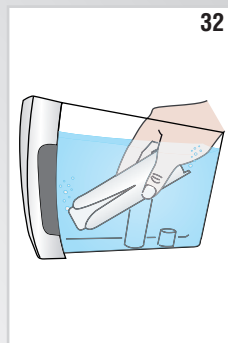
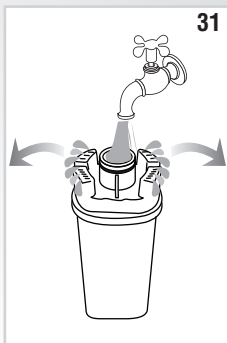
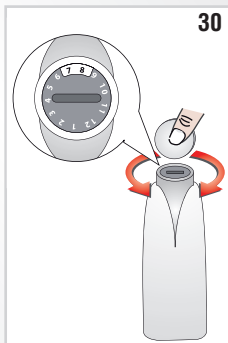
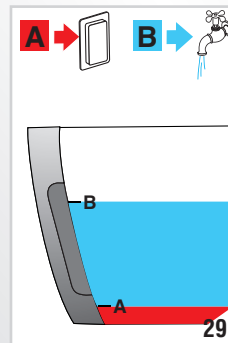
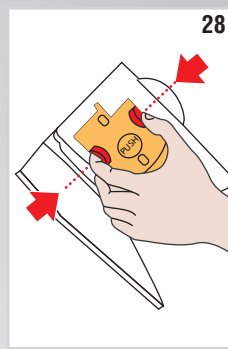
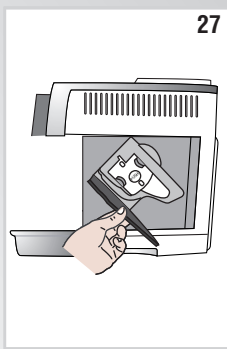
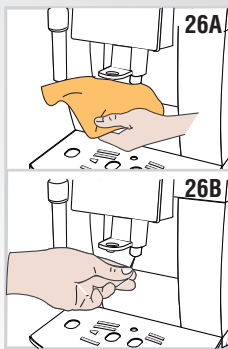
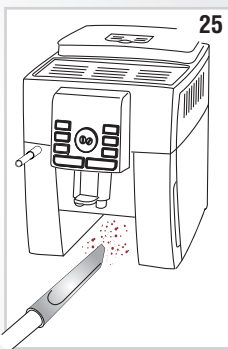
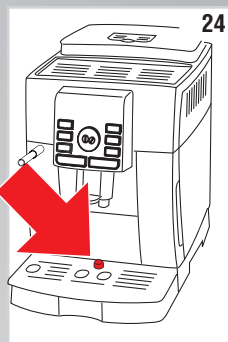
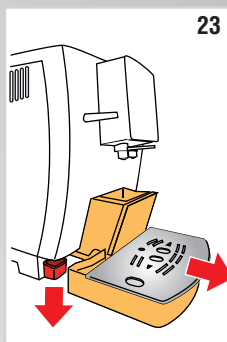
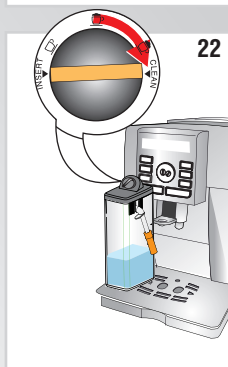
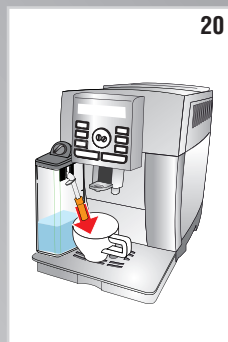
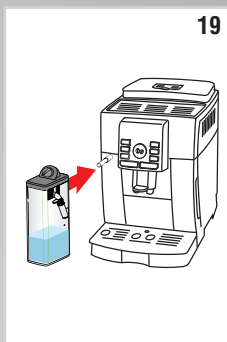
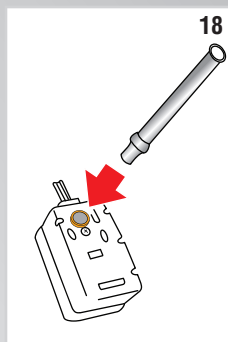
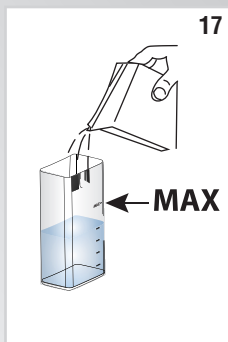
**ECAM25462/ECAM25467**

**B****C****D**

**A**







## **CORD CLAMP**

<b>INTRODUCTION .....</b>	<b>7</b>
Symbols used in these instructions .....	7
Letters in brackets .....	7
Troubleshooting and repairs .....	7
<b>SAFETY .....</b>	<b>7</b>
Fundamental safety warnings .....	7
<b>DESIGNATED USE .....</b>	<b>7</b>
<b>INSTRUCTIONS FOR USE .....</b>	<b>8</b>
<b>DESCRIPTION .....</b>	<b>8</b>
Description of the appliance .....	8
Description of the control panel .....	8
Description of the accessories .....	8
Description of milk container .....	8
<b>PRELIMINARY CHECKS .....</b>	<b>8</b>
Checking the appliance .....	8
Installing the appliance .....	8
Connecting the appliance .....	9
Setting up the appliance .....	9
<b>TURNING THE APPLIANCE ON .....</b>	<b>9</b>
<b>TURNING THE APPLIANCE OFF .....</b>	<b>9</b>
<b>MENU SETTINGS .....</b>	<b>10</b>
Descaling .....	10
Install filter .....	10
Replacing the filter .....	10
Adjust time .....	10
Auto-start .....	10
Auto-Off .....	10
Cup warmer .....	10
Energy saving .....	10
Setting the temperature .....	10
Setting water hardness .....	11
Enable/disable the beep .....	11
Setting the language .....	11
Cup lighting .....	11
Default values (reset) .....	11
Statistics function .....	11
<b>MAKING COFFEE .....</b>	<b>11</b>
Selecting the coffee flavour .....	11
Selecting the quantity of coffee in the cup .....	11
Customising the "my coffee" quantity .....	12
Adjusting the coffee mill .....	12
Tips for a hotter coffee .....	12
Making coffee using coffee beans .....	12
Making coffee using pre-ground coffee .....	12

## **MAKING CAPPUCCINO AND MILK BASED COFFEES .... 13**

Filling and attaching the milk container .....	13
Adjusting the amount of froth .....	13
Preparing cappuccino .....	13
Making CAFFELATTE/MACCHIATO/FLAT WHITE/ MILK .....	13
Cleaning the milk container after each use .....	14
Programming the quantities of coffee and milk in the cup .....	14
Programming cappuccino: .....	14
Programming the MILK MENU drinks: .....	14

## **MAKING HOT WATER ..... 14**

Changing the quantity of water delivered automatically .....	14
--	----

## **CLEANING ..... 15**

Cleaning the machine .....	15
Cleaning the coffee grounds container .....	15
Cleaning the drip tray and condensate tray .....	15
Cleaning the inside of the coffee machine .....	15
Cleaning the water tank .....	15
Cleaning the coffee spouts .....	15
Cleaning the pre-ground coffee funnel .....	15
Cleaning the infuser .....	15
Cleaning the milk container .....	16
Cleaning the hot water/steam nozzle .....	16

## **DESCALING..... 16**

## **SETTING WATER HARDNESS..... 17**

Measuring water hardness .....	17
Setting water hardness .....	17

## **WATER SOFTENER FILTER ..... 18**

Installing the filter .....	18
Replacing the filter .....	18
Removing the filter .....	18

## **TECHNICAL DATA..... 18**

## **DISPOSAL ..... 18**

## **DISPLAYED MESSAGES ..... 19**

## **TROUBLESHOOTING ..... 20**

## INTRODUCTION

Thank you for choosing this automatic espresso and cappuccino machine. We hope you enjoy using your new appliance. Take a few minutes to read this Instruction for Use. This will avoid all risks and damage to the appliance.

### Symbols used in these instructions

Important warnings are identified by these symbols. It is vital to respect these warnings.



Failure to observe the warning may result in life threatening injury by electric shock.



Failure to observe the warning could result in injury or damage to the appliance.



Failure to observe the warning could result in scalds or burns.



This symbol identifies important advice or information for the user.

### Letters in brackets

The letters in brackets refer to the legend in the Description of the Appliance on page 3.

### Troubleshooting and repairs

In the event of problems, first try and resolve them following the information given in the sections "Displayed messages" on page 19 and "Troubleshooting" on page 20.

If this does not resolve the problem or you require further information, you should consult customer assistance by calling the number given on the attached "Customer Assistance" leaflet. If your country is not among those listed on the sheet, call the number given in the warranty. If repairs are required, contact De'Longhi customer experience only. The addresses are given in the guarantee certificate provided with the machine.

## SAFETY

### Fundamental safety warnings



This is an electrical appliance and thus could cause electric shock.

You should therefore respect the following safety warnings:

- Never touch the appliance with damp hands or feet.
- Never touch the plug with damp hands.
- Make sure the socket used is freely accessible at all times,

enabling the appliance to be unplugged when necessary.

- Unplug directly from the plug only. Never pull the power cable as you could damage it.
- To disconnect the appliance completely, release the main switch at the back of the appliance (fig. 2).
- If the appliance is faulty, do not attempt to repair. Turn it off, unplug it from the mains socket and contact customer assistance.
- If the plug or power cable is damaged, it must be replaced by De'Longhi Customer Services only to avoid all risk.



- Keep all packaging material (plastic bags, polystyrene foam) away from children.
- The appliance is not intended for use by persons (including children) with reduced physical, sensory or mental capabilities, or lack of experience and knowledge, unless they have been given supervision or instruction concerning use of the appliance by a person responsible for their safety. Children should be supervised to ensure that they do not play with the appliance.



This appliance produces hot water and steam may form while it is in operation.

Avoid contact with splashes of water or hot steam.

### DESIGNATED USE

This appliance is designed and made to prepare coffee and heat drinks.

All other use is considered improper.

This appliance is not suitable for commercial use.

The manufacturer is not liable for damage deriving from improper use of the appliance.

This is a household appliance only. It is not intended to be used in:

- staff kitchen areas in shops, offices and other working environments;
- farm houses;
- by clients in hotels, motels and other residential type environments;
- bed and breakfast type environments.

## INSTRUCTION FOR USE

Read these instructions carefully before using the appliance.

- Failure to respect these instructions may result in burns or damage to the appliance.

The manufacturer is not liable for damage deriving from failure to respect these instructions for use.



*Please note :*

Keep these instructions. If the appliance is passed on to other persons, they must also be provided with these instructions for use.

## DESCRIPTION

### Description of the appliance

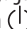

(page 3 - A )

- A1. Control panel
- A2. Grinding adjustment dial
- A3. Cup shelf (cup warmer active when selected from settings menu)
- A4. Bean container lid
- A5. Pre-ground coffee funnel lid
- A6. Pre-ground coffee funnel
- A7. Bean container
- A8. Main switch
- A9. Socket for power cable connector
- A10. water tank
- A11. Infuser door
- A12. infuser
- A13. Coffee spout (adjustable height)
- A14. Coffee grounds container
- A15. Condensate tray
- A16. Cup tray
- A17. Drip tray water level indicator
- A18. Drip tray
- A19. Cup lighting
- A20. Hot water and steam connection nozzle


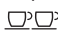
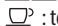
### Description of the control panel

(page 2 - B )

*Some keys on the panel have a double function: this is shown in parenthesis inside the description.*

- B1. Display: guides the user in using the appliance.
- B2. Button  : turns the appliance on and off.
- B3. **MENU** button to access the menu
- B4. Button  : to perform a rinse cycle.  
(When in the settings MENU, it acts as the "ESC" button to exit from the selected function and go back to the main menu).
- B5. **CAPPUCCINO BUTTON**: to prepare a cappuccino.
- B6. Selection dial:
  - rotate it to select the amount of coffee desired.
  - press to select the desired flavour.

(When in the settings MENU: turn to select the required function).

- B7. **MILK MENU** button: to access preparation of MACCHIATO, CAFFELATTE, FLAT WHITE and MILK.
- B8. Button  : to deliver hot water.  
(When in the MENU: press the "OK" button to confirm the item chosen)
- B9. Button  : to make 2 cups of coffee
- B10. Button  : to make 1 cup of coffee

### Description of the accessories

(page 2 - C )

- C1. Measure
- C2. Cleaning brush
- C3. Hot water spout
- C4. Water softener filter (certain models only)
- C5. "Total Hardness Test" indicator paper
- C6. Power cable
- C7. Descaler

### Description of milk container

(page 3 - D )

- D1. Froth adjustment and CLEAN dial
- D2. Frothed milk spout (adjustable)
- D3. Milk intake tube
- D4. Milk container

## PRELIMINARY CHECKS

### Checking the appliance

After removing the packaging, make sure the product is complete and undamaged and that all accessories are present. Do not use the appliance if it is visibly damaged. Contact De'Longhi customer assistance.

### Installing the appliance



*Important!*

When installing the appliance, you should respect the following safety warnings:

- The appliance gives off heat. After positioning the appliance on the worktop, leave a space of at least 3 cm between the surfaces of the appliance and the side and rear walls and at least 15 cm above the coffee machine.
- Water penetrating the appliance could cause damage. Do not place the appliance near taps or sinks.
- The appliance could be damaged if the water it contains freezes. Do not install the appliance in a room where the temperature could drop below freezing point.
- Arrange the power cable in such a way that it cannot be damaged by sharp edges or contact with hot surfaces (e.g. electric hot plates).

## Connecting the appliance



### *Important!*

Check that the mains power supply voltage corresponds to the value indicated on the rating plate on the bottom of the appliance.

Connect the appliance to an efficiently earthed and correctly installed socket with a minimum current rating of 10A only.

If the power socket does not match the plug on the appliance, have the socket replaced with a suitable type by a qualified professional.

## Setting up the appliance




### *Please note :*


- Coffee has been used to factory test the appliance and it is therefore completely normal for there to be traces of coffee in the mill. The machine is, however, guaranteed to be new.
- You should customise water hardness as soon as possible following the Instruction for use in the section "Setting water hardness" on page 17.

1. Plug the power cable connector into the socket at the back of the appliance and connect the appliance to the mains electricity supply (fig. 1) making sure the main switch on the back of the appliance is pressed (fig. 2).

You must first choose the language by turning the selection dial, or waiting until the languages scroll through on the display at intervals of about 3 seconds:

2. When "English" appears, press the button  (fig. 3) for a few seconds until "English set" is displayed.

Follow the instructions indicated on the appliance display:

3. "FILL TANK": remove the water tank, fill to the MAX line with fresh water (fig. 4A), then replace in the appliance (fig. 4B).
4. "INSERT WATER SPOUT": Check that the hot water spout is inserted on the nozzle and place a container with a minimum capacity of 100 ml under the cappuccino maker (fig. 5).
5. "HOT WATER CONFIRM?" is displayed;
6. Press the  button to confirm: the appliance delivers water from the spout then goes off automatically.

The coffee machine is now ready for normal use.



### *Please note :*

- When using the appliance for the first time, you need to make 4-5 cups of coffee or 4-5 cappuccinos before it starts to give satisfactory results.
- When making the first 5-6 cappuccinos, it is normal to hear the noise of boiling water: the noise will diminish.

- To enjoy your coffee even more and improve the performance of your appliance, we recommend installing a water softener filter as described in the section "Install filter". If your model is not provided with a filter, you can request one from De'Longhi Customer Service.

## TURNING THE APPLIANCE ON



### *Please note :*

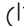
Before turning the appliance on, make sure the main switch on the back of the appliance is pressed (fig. 2).

Each time the appliance is turned on, it performs an automatic preheat and rinse cycle which cannot be interrupted. The appliance is ready for use only after completion of this cycle.



### *Danger of burns!*

During rinsing, a little hot water comes out of the coffee spouts and is collected in the drip tray underneath. Avoid contact with splashes of water.

- To turn the appliance on, press the  button (fig. 6). The message "Heating up Please wait" is displayed.

After heating, the message "Rinsing" is displayed; in this manner, besides heating the boiler, the appliance also heats the internal circuits by circulating hot water.

The appliance is at temperature when the message indicating the flavour and quantity of coffee appears.


## TURNING THE APPLIANCE OFF

Each time the appliance is turned off it performs an automatic rinse if a coffee has been prepared.



### *Danger of burns!*


During rinsing, a little hot water flows from the coffee spouts. Avoid contact with splashes of water.

To turn the appliance off, press the  button (fig. 6). The appliance performs a rinse cycle then goes off (stand-by).



### *Please note :*

If you will not be using the appliance for a long time, unplug it from the mains socket:

- first turn the appliance off by pressing the  button (fig. 6);
- press the main switch (fig. 2).



### *Important!*

Never press the main switch while the appliance is on.

## MENU SETTINGS

Access the settings menu by pressing the **MENU** button; the following menu items are available:

### Descaling

For instructions on descaling, see page 16.

### Install filter



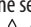
For instructions on how to install the filter, see the section "Installing the filter" (page 18).


### Replacing the filter

For instructions on how to replace the filter, see the section "Replacing the filter" (page 18).

### Adjust time

To adjust the time on the display, proceed as follows:

1. Press the **MENU** button to enter the menu;
2. Turn the selection dial (fig. 7) until "Adjust time" is displayed;
3. Press ;
4. Turn the selection dial to change the hours;
5. Press  to confirm;
6. Turn the selection dial to change the minutes;
7. Press  to confirm.

The time is now set: Then press  to exit the menu.



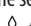
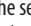
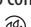
### Auto-start


You can set the auto-start time in order to have the appliance ready at a certain time (for example in the morning) so you can make coffee immediately.





*Please note:*


To enable this function, the time must already be set correctly.

1. Press the **MENU** button to enter the menu;
2. Turn the selection dial until "Auto-start" is displayed;
3. Press  : "Enable?" will appear on the display;
4. Press the  button to confirm.
5. Turn the selection dial to choose the hours;
6. Press  to confirm;
7. Turn the selection dial to change the minutes;
8. Press  to confirm;
9. Then press  to exit the menu.

Once the time is confirmed, the auto-start activation is shown on the display with the  symbol that is displayed next to the time and below the Auto-start item on the menu.



To disable the function:

1. Select auto-start from the menu;
2. Press  : "Disable?" will appear on the display;
3. Press the  button to confirm.

The display no longer shows the  symbol.

### Auto-Off




Auto-off can be set so that the appliance goes off after 15 or 30 minutes, or after 1, 2 or 3 hours.

1. Press the **MENU** button to enter the menu;
2. Turn the selection dial until "Auto-Off" is displayed;
3. Press ;
4. Turn the selection dial until the desired operation time is displayed (15 or 30 minutes, or 1, 2 or 3 hours);
5. Press the  button to confirm.

Auto-off has been reprogrammed: press  to exit the menu.

### Cup warmer

This function enables the cup warmer to be enabled or disabled. Proceed as follows:

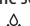


1. Press the **MENU** button to enter the menu;
2. Turn the selection dial until "Cup warmer" is displayed;
3. Press  : "Enable?" or "Disable?" is displayed;
4. Press  to enable or disable the cup warmer (an asterisk under "Cup Warmer" shows that it is active).
5. Then press the  button to exit the menu.

Warming the cups keeps the coffee hot.

### Energy saving

Use this function to enable or disable Energy saving. When enabled, the function reduces energy consumption in compliance with current European regulations.

When energy saving mode is active, an asterisk appears below "Energy saving" in the menu.

1. Press the **MENU** button to enter the menu;
  2. Turn the selection dial until "Energy saving" is displayed;
  3. Press  : "Enable?" or "Disable?" is displayed;
  4. Press  to enable or disable the energy saving mode;
- Then press  to exit the menu.

When the function is active, if the machine is not used for some time, "Energy saving" is displayed.





*Please note:*

- When in energy saving mode, a few seconds elapse before the first coffee, cappuccino or milk based coffee is delivered as the appliance must heat up again.
- To prepare any drink, press any button to exit energy saving, then press the button corresponding to the drink you want to make.
- If the milk container is inserted, "Energy saving" is not activated.

### Setting the temperature

To modify the temperature (low, medium, high) of the water used to make the coffee, proceed as follows:

1. Press the **MENU** button to enter the menu;

2. Turn the selection dial until "Set temperature" is displayed;
3. Press the  button.
4. Turn the selection dial until the desired temperature (●=low; ●●●●=high) is shown on the display.
5. Press  to confirm.



The temperature has been reprogrammed: press  to exit the menu.

### Setting water hardness

For instructions on setting water hardness, see page 17.

### Enable/disable the beep




This enables or disables the beep emitted by the machine each time an icon is pressed or an accessory is inserted/removed. To disable or re-enable the beep, proceed as follows:

1. Press the **MENU** button to enter the menu;
2. Turn the selection dial until "Beep" is displayed;
3. Press  : "Enable?" or "Disable?" is displayed;
4. Press the  button to enable or disable the beep;
5. When the function is enabled an asterisk appears under "Beep" in the menu.

Then press  to exit the menu.

### Setting the language

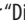

To modify the language on the display, proceed as follows:


1. Press the **MENU** button to enter the menu;
2. Turn the selection dial until "Set language" is displayed;
3. Press ;
4. Turn the selection dial until the desired language is displayed;
5. Press  to confirm;
6. A message confirming the language installed is displayed;
7. Then press the  button to exit the menu.

### Cup lighting

This function enables or disables the cup lighting. When the function is active, the lighting comes on whenever cappuccino or milk based drinks are made or the appliance is rinsed.



To disable or re-enable this function, proceed as follows:

1. Press the **MENU** button to enter the menu;
2. Turn the selection dial until "Cup lighting" is displayed.
3. Press  : "Enable?" or "Disable?" is displayed;
4. Press the  button to enable or disable the cup lighting;
5. When the function is active, an asterisk appears under "Cup lighting" in the menu.

Then press  to exit the menu.



### Default values (reset)

This resets all menu settings and programmed quantities back to the default values (with the exception of the language which remains as set).

1. Press the **MENU** button to enter the menu;
2. Turn the selection dial until "Default values" is displayed;
3. Press ;
4. Confirm?" is displayed.
5. Press  to confirm and exit.

### Statistics function

This displays statistics relating to the machine. To display, proceed as follows:

1. Press the **MENU** button to enter the menu;
2. Turn the selection dial until "Statistics" is displayed;
3. Press the  button.
4. Turn the selection dial to verify:
  - how many coffees have been made;
  - how many drinks have been made using milk;
  - the total number of litres of water delivered;
  - how many times the machine has been descaled.
  - how many times the water softener filter has been replaced.
5. Press the  button twice to exit the menu.

## MAKING COFFEE

### Selecting the coffee flavour

The appliance is set by default to make coffee with a standard flavour.

You can also choose one of these flavours:

Extra-mild  
Mild  
Standard  
Strong  
Extra-strong

To change the taste, press the  dial (fig. 7) repeatedly until the required taste is displayed.


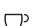
### Selecting the quantity of coffee in the cup

To select the quantity of coffee, turn the selection dial (fig. 8) until the message corresponding to the required quantity of coffee is displayed:

Coffee selected	Quantity in cup (ml)
MY COFFEE	≈30 (program. from ≈20 to ≈180)
SHORT	≈40
STANDARD	≈60
LONG	≈90
EXTRA LONG	≈120

### Customising the “my coffee” quantity

The machine is preset to deliver about 30ml of “MY COFFEE”. To modify this quantity, proceed as follows:

1. Place a cup under the coffee spouts (fig. 9).
2. Turn the selection dial (fig. 8) until “MY COFFEE” is displayed.
3. Keep the  button (fig. 10) pressed until the message “1 MY COFFEE Program quantity” is displayed and coffee delivery begins. Release the button.
4. As soon as the coffee in the cup reaches the required level, press the  button (fig. 10) again.

The quantity of coffee in the cup has now been programmed.

### Adjusting the coffee mill

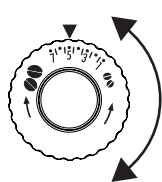
The coffee mill is set by default to prepare coffee correctly and should not require regulating initially.

However, if after making the first few coffees you find that the coffee is either too weak and not creamy enough or delivery is too slow (in drops), this can be corrected by adjusting the grinding adjustment dial (fig. 11).



Please note :

The grinding adjustment dial must only be turned when the coffee mill is in operation.



If the coffee comes out too slowly or doesn't come out at all, turn the dial one time to number 7.


For fuller bodied creamier coffee, turn one click anticlockwise towards “1” (do not turn more than one click at a time otherwise the coffee could

be delivered a drop at a time).

These adjustments will only be evident after at least 2 cups of coffee have been delivered. If this adjustment does not obtain the desired result, turn the dial another click.

### Tips for a hotter coffee

For hotter coffee, you should:

- rinse before delivering coffee by pressing the  button: hot water will come out of the spout that heats the circuit inside the machine making the coffee hotter;


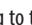
- warm the cups with hot water (using the hot water function);
- enable the cup warmer in the settings menu and leave the cups until they are warm;
- raise the coffee temperature in the settings menu.

### Making coffee using coffee beans



**Important!**

Do not use caramelised or candied coffee beans as they could stick to the coffee mill and make it unusable.



1. Fill the container with coffee beans (fig. 12).
2. Place under the coffee spouts:
  - 1 cup, if you want to make 1 coffee (fig. 9);
  - 2 cups, if you want 2 coffees (fig. 13);
3. Lower the spout as near as possible to the cups: this will make it creamier (fig. 14).
4. Press the button corresponding to the number of coffees required (1 cup  or 2 cups .
5. The preparation starts and the display shows the coffee selected and a progression bar that fills gradually as the coffee is prepared.

Once the coffee has been made, the appliance is ready to make the next drink.



Please note :

While the appliance is making coffee, the flow can be interrupted at any moment by pressing any button.

- At the end of delivery, to increase the quantity of coffee in the cup, just press and hold one of the coffee buttons (within 3 seconds) (  or  ).



Please note :

For hotter coffee, consult the paragraph “**Tips for hotter coffee**”.



**Important!**

- If the coffee is delivered a drop at a time, too weak and not creamy enough or too cold, read the tips in the “Troubleshooting” section on page 20.
- Various alarm messages could be displayed while using the machine (FILL TANK, EMPTY GROUNDS CONTAINER, etc). Their meaning is explained in the section “Displayed messages” (page 19).

### Making coffee using pre-ground coffee



**Important!**

- Never place coffee beans in the pre-ground coffee funnel as this could damage the appliance.
- Never add pre-ground coffee when the machine is off or it





could spread through the inside of the machine and dirty it. This could damage the appliance.

- Never use more than one level measure or it could dirty the inside of the machine or block the funnel.



*Please note:*

When you use pre-ground coffee, you can only make one cup of coffee at a time.

1. Make sure the appliance is on.
2. Press the dial  (fig. 7) repeatedly until "Pre-ground" is displayed.
3. Make sure the funnel is not blocked, then add one level measure of pre-ground coffee (fig. 15).
4. Place a cup under the coffee spouts.
5. Press the 1 cup dispensing button .
6. The preparation starts and the display shows the coffee selected and a progression bar that fills gradually as the coffee is prepared.



*Please note:*

If "Energy Saving" mode is enabled, you may have to wait a few seconds before the first cappuccino is dispensed.

## MAKING CAPPUCCINO AND MILK BASED COFFEES



*Please note:*

- To avoid producing milk with poor froth or large bubbles, always clean the milk container lid and hot water connection nozzle as described in the section "Cleaning the milk container" on pages 14 and 16.

### Filling and attaching the milk container

1. Remove the lid (fig. 16);
2. Fill the milk container with a sufficient quantity of milk, not exceeding the MAX level marked on the handle (fig. 17). Each mark on the side of the container corresponds to 100 ml of milk.



*Please note:*




- For a denser more even froth, you must use skimmed or partially skimmed milk at refrigerator temperature (about 5°C).  
If "energy saving" mode is enabled, you may have to wait a few seconds before the first cappuccino is delivered.
3. Make sure the milk intake tube is correctly inserted in the bottom of the milk container lid (fig. 18).
  4. Attach the lid back on the milk container.
  5. Attach the container to the connection nozzle and push as far as it will go (fig. 19). The machine emits a beep.
  6. Place a sufficiently large cup under the coffee and frothed

milk spouts. Adjust the length of the milk spout. To move it nearer the cup, simply pull it downwards (fig. 20).

7. Follow the instructions below for each function.

### Adjusting the amount of froth

Turn the froth adjustment dial on the milk container lid to adjust the amount of froth on the milk delivered while making milk drinks (fig. 21). Follow the tips in the table below:

Dial position	Description	Recommended for...
	No froth	CAFFELATTE / MILK (hot milk)
	Min. froth	LATTE MACCHIATO / FLAT WHITE
	Max. froth	CAPPUCCINO / MILK (frothy milk)

### Preparing cappuccino

1. After attaching the milk container, turn the froth regulator on the milk container lid to the required position (fig. 21).
2. Press the CAPPUCCINO button. "CAPPUCCINO" is displayed, together with a progress bar which fills gradually as preparation proceeds.
3. After dispensing the milk, the machine automatically makes the coffee.



*Please note:*

- If during dispensing you want to stop preparation, press the CAPPUCCINO BUTTON TWICE.
- At the end of delivery, to increase the quantity of milk or coffee in the cup, within 3 seconds, press and hold the CAPPUCCINO button.
- Do not leave the milk container out of the refrigerator for long periods. The warmer the milk (5°C is ideal), the poorer the quality of froth produced.

### Making CAFFELATTE/MACCHIATO/FLAT WHITE/ MILK

1. After attaching the milk container, turn the froth regulator on the milk container lid to the required position (fig. 21).
2. Press **MILK MENU**.
3. Turn the selection dial until the required drink is displayed (CAFFELATTE, MACCHIATO, FLAT WHITE, MILK);
4. Press **MILK MENU** to confirm: the display will show the name of the drink selected and a progression bar that fills gradually as the coffee is prepared.
5. After a few seconds, milk is dispensed from the milk spout into the cup below. Milk dispensing stops automatically

and (if needed for the drink), coffee delivery starts.



*Please note:*

- Milk or coffee dispensing can be interrupted at any time by pressing the **CAPPUCCINO** or **MILK MENU** button according to the drink selected.
- At the end of delivery, to increase the quantity of milk or coffee in the cup, within 3 seconds, press one of the buttons for milk-based drinks.
- Do not leave the milk container out of the refrigerator for long periods. The warmer the milk (5°C is ideal), the poorer the quality of froth produced.

### Cleaning the milk container after each use



*Important! Danger of burns*

When cleaning the internal tubes of the milk container, a little hot water and steam leak out of the frothed milk spout. Avoid contact with splashes of water.

"SET DIAL TO CLEAN" flashes on the display each time you use a milk function. To eliminate all milk residues, proceed as follows:

1. Leave the milk container in the machine (you do not need to empty it);
2. Place a cup or other recipient under the frothed milk spout.
3. Turn the froth adjustment dial to "CLEAN" (fig. 22). A progress bar appears and gradually fills as the operation proceeds together with "Cleaning underway". Cleaning stops automatically.
4. Turn the dial back to one of the froth selections.
5. Remove the milk container and always clean the steam nozzle with a sponge (fig. 26).



*Please note:*

- To prepare a number of cappuccinos or milk based drinks, clean the milk container after you have prepared the last drink only.
- The milk container can be kept in the refrigerator.
- In some cases, to clean you must wait for the appliance to heat up.

### Programming the quantities of coffee and milk in the cup

The appliance is set by default to automatically deliver standard quantities. To change these quantities, proceed as follows:

1. Place a cup under the coffee spouts and milk spout.

#### Programming cappuccino:

2. Hold the **CAPPUCCINO** button until the message "CAPPUCCINO PROGRAM MILK" IS DISPLAYED.

3. The appliance starts dispensing milk. Release the button.
4. Once the required quantity of milk has been delivered into the cup, press the **CAPPUCCINO** button again.
5. After a few seconds, the appliance starts delivering coffee into the cup and the message "CAPPUCCINO PROGRAM COFFEE" is displayed.
6. Once the required quantity of coffee has been delivered into the cup, press the **CAPPUCCINO** button.

Coffee delivery stops and the machine is "ready for use" again. This completes programming.

#### Programming the MILK MENU drinks:

2. Press **MILK MENU**.
3. Turn the selection dial until the drink you want to programme again is displayed (CAFFELATTE, MACCHIATO, FLAT WHITE, MILK);
4. Hold down the **MILK MENU** button for a few seconds until "(DRINK) PROGRAM MILK" IS DISPLAYED.
5. The appliance starts dispensing milk. Release the button.
6. Once the required quantity of milk has been delivered into the cup, press the **MILK MENU** button again.
7. After a few seconds, if required by the drink, the appliance starts delivering coffee into the cup and the message "(DRINK) PROGRAM COFFEE" is displayed.
8. Once the required quantity of coffee has been delivered into the cup, press the **MILK MENU** button.

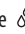

Coffee delivery stops and the machine is "ready for use" again. This completes programming.

### MAKING HOT WATER



*Danger of burns!*

Never leave the machine unsupervised while hot water is being delivered.

1. Make sure the hot water spout is attached correctly.
2. Place a container under the water spout (as close as possible to avoid splashes) (fig. 5).
3. Press the  button. "Hot water" is displayed, together with a progress bar which fills gradually as preparation proceeds.
4. Hot water delivery begins and then stops automatically. To manually stop dispensing hot water, press .





*Please note:*

If "Energy saving" mode is active, you may have to wait a few seconds before the hot water is delivered.

### Changing the quantity of water delivered automatically

The machine is set by default to automatically dispense 250 ml

of hot water. To modify these quantities, proceed as follows:

1. Make sure the hot water spout is attached correctly.
2. Position a container under the spout.
3. Press and hold the  button until "HOT WATER Program quantity" is displayed, then release.
4. When the hot water in the cup reaches the required level, press the  **BUTTON**.

The machine is now reprogrammed with the new quantity.

## CLEANING

### Cleaning the machine

The following parts of the machine must be cleaned regularly:

- coffee grounds container (A14),
- drip tray (A18) and condensate tray (A15),
- water tank (A10),
- coffee spouts (A13) and hot water nozzle (A20),
- pre-ground coffee funnel (A6),
- inside of the machine, accessible after opening the infuser door (A11),
- infuser (A12).
- milk container (D)



#### *Important!*

- Do not use solvents, abrasive detergents or alcohol to clean the appliance. With De'Longhi superautomatic bean to cup espresso and cappuccino machines, you need not use chemical products to clean the machine.
- None of the components can be washed in a dishwasher.
- Do not use metal objects to remove encrustations or coffee deposits as they could scratch metal or plastic surfaces.

### Cleaning the coffee grounds container

When "EMPTY GROUNDS CONTAINER" is displayed, the grounds container must be emptied and cleaned. Until the grounds container has been cleaned, the appliance continues to display the message and coffee cannot be made.

To clean (with the machine on):

- Remove the drip tray (fig. 23), empty and clean.
- Empty the grounds container and clean thoroughly to remove all residues left on the bottom. This can be done with the spatula on the brush provided.
- Check the condensate tray and empty if necessary.



#### *Important!*

When removing the drip tray, the grounds container **must** be emptied, even if it contains few grounds.

If this is not done, when you make the next coffees, the grounds container may fill up more than expected and clog the machine.

### Cleaning the drip tray and condensate tray



#### *Important!*

The drip tray is fitted with a level indicator (red) showing the level of water it contains (fig. 24). Before the indicator protrudes from the cup tray, the drip tray must be emptied and cleaned, otherwise the water may overflow the edge and damage the appliance, the surface it rests on or the surrounding area.

To remove the drip tray:

1. Remove the drip tray and grounds container (fig. 23);
2. Empty the drip tray and grounds container and wash them;
3. Check the condensate tray and empty if necessary.
4. Replace the drip tray complete with grounds container.

### Cleaning the inside of the coffee machine



#### *Danger of electric shock!*

Before cleaning internal parts, the machine must be turned off (see "Turning off") and unplugged from the mains power supply. Never immerse the coffee machine in water.

1. Check regularly (about once a week) that the inside of the appliance (accessible after removing the drip tray) is not dirty. If necessary, remove coffee deposits with the brush supplied and a sponge.
2. Remove the residues with a vacuum cleaner (fig. 25).

### Cleaning the water tank

1. Clean the water tank (A10) regularly (about once a month) and whenever you replace the water softener filter (if provided) with a damp cloth and a little mild washing up liquid.
2. Remove the filter (if present) and rinse with running water.
3. Replace the filter (if provided), fill the tank with fresh water and replace the tank.

### Cleaning the coffee spouts

1. Clean the coffee spouts with a sponge or cloth (fig. 26A).
2. Check the holes in the coffee spout are not blocked. If necessary, remove coffee deposits with a toothpick (fig. 26B).

### Cleaning the pre-ground coffee funnel

Check regularly (about once a month) that the pre-ground coffee funnel (A6) is not blocked. If necessary, remove coffee deposits with the brush supplied (C2).

### Cleaning the infuser

The infuser (A12) must be cleaned at least once a month.



### Important!

The infuser may not be extracted when the machine is on.

1. Make sure the machine is correctly turned off (see "Turning off", page 9).
2. Extract the water tank.
3. Open the infuser door (fig. 27) on the right side of the appliance.
4. Press the two red release buttons inwards and at the same time pull the infuser outwards (fig. 28).



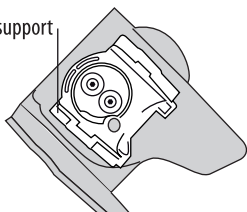
### Important!

**RINSE WITH WATER ONLY NO WASHING UP LIQUID - NO DETERGENTS - NO DISHWASHER**

Clean the infuser without using washing up liquid as it could be damaged.

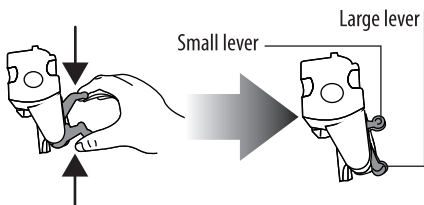
5. Soak the infuser in water for about 5 minutes, then rinse under the tap.
6. Use the brush to remove any coffee residues left in the infuser housing, visible through the infuser door.
7. After cleaning, replace the infuser by sliding it onto the internal support, then push the PUSH symbol fully in until it clicks into place.

infuser support

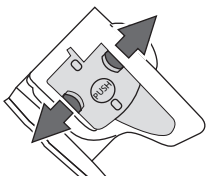


### Please note :

If the infuser is difficult to insert, before insertion, adapt it to the right size by pressing the two levers shown in the figure.



8. Once inserted, make sure the two red buttons have snapped out.



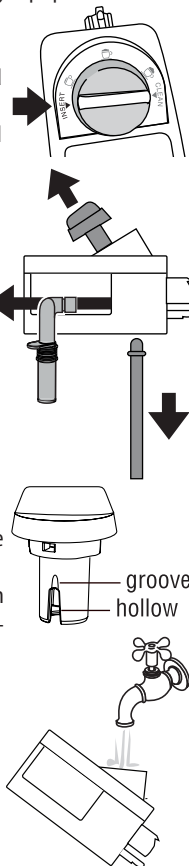
9. Close the infuser door.

10. Replace the water tank.

### Cleaning the milk container

Clean the milk container each time you prepare milk as described below:

1. Remove the lid.
2. Remove the milk spout and intake tube.
3. Turn the froth adjustment dial clockwise to the "INSERT" position (see figure) and pull off upwards.
4. Wash all the components thoroughly with hot water and mild washing-up liquid. All components are dishwasher safe, placing them in the top basket of the dishwasher. Make sure there are no milk residues on the hollow and groove under the dial (see figure alongside). If necessary, scrape the groove with a toothpick.
5. Rinse inside the froth adjustment dial seat with running water (see figure).
6. Check that the intake tube and spout are not clogged with milk residues.
7. Replace the dial (lining up the arrow with the word "INSERT"), the spout and the milk intake tube.
8. Place the lid back on the milk container.



### Cleaning the hot water/steam nozzle

Each time you prepare milk, clean the nozzle with a sponge to remove milk residues from the gaskets (see figure alongside).



### DESCALING

Descalc the machine when the message "DESCALE" FLASHES ON THE DISPLAY.



### Important!

- Descaler contains acids which may irritate the skin and eyes. It is vital to respect the manufacturer's safety warnings given on the descaler pack and the warnings relating to the procedure to follow in the event of contact with the skin and eyes.
  - You should use De'Longhi descaler only. Using unsuitable descaler and/or performing descaling incorrectly may result in faults not covered by the manufacturer's guarantee.
1. Turn the machine on.
  2. Press the **MENU** button to enter the menu.
  3. Turn the selection dial until "Descale" is displayed.
  4. Select by pressing the button : "Descale Confirm?" is displayed. Press again to enable the function.
  5. The message "Add descaler Confirm?" is displayed, alternating with "EMPTY THE DRIP TRAY" and "REMOVE FILTER" (if the filter is present).
  6. Empty the water tank (A10) completely and remove the water softener filter (if present). Empty the drip tray (fig. 23) and grounds container, then put them back in the appliance.
  7. Pour the descaler into the water tank up to the level **A** (corresponding to a 100 ml pack) marked on the back of the tank (fig. 29), then add water (1 litre) up to level **B** (fig. 29). Replace the water tank.
  8. Place an empty container with a minimum capacity of 1.5 litres under the hot water spout (fig. 5).



### Danger of burns!

Hot water containing acid flows out of the hot water spout. Avoid contact with splashes of water.

9. Press the button to confirm that you have added the solution.
10. The message "Descale underway" is displayed. The descale programme starts and the descaler liquid comes out of the water spout. The descale programme automatically performs a series of rinses and pauses to remove limescale deposits from inside the machine.

After about 30 minutes, the message "Rinsing"/"INSERT FILTER" (if present), "FILL TANK" is displayed.

11. The appliance is now ready for rinsing through with clean water. Extract the water tank, empty, rinse under running water, fill with clean water up to the MAX level, insert the filter (if removed previously) and put the water tank back in the machine. "RINSING Confirm?" is displayed.
12. Empty the container used to collect the descaler solution and replace it empty under the cappuccino maker.
13. Press the button to starting rinsing. Hot water flows

out of the spout and the message "RINSING PLEASE WAIT" is displayed.

14. When the water tank is completely empty, the message "Rinsing complete Confirm?" is displayed.
15. Press the button to confirm. "FILL TANK" is displayed. Fill and replace the water tank.
16. "Heating up Please wait" is displayed at the end of which the machine will be ready for use.

## SETTING WATER HARDNESS

The DESCALE message is displayed after a period of time established according to water hardness.

The machine is set by default for a hardness value of 4. The machine can also be programmed according to the hardness of the mains water in the various regions so that the machine needs to be descaled less often.

### Measuring water hardness

1. Remove the "TOTAL HARDNESS TEST" indicator paper from its pack (attached to the English instructions).
2. Immerse the paper completely in a glass of water for one second.
3. Remove the paper from the water and shake lightly. After about a minute, 1, 2, 3 or 4 red squares appear, depending on the hardness of the water: each square corresponds to one level.

soft water

slightly hard water

hard water

very hard water

### Set water hardness

1. Press the **MENU** button to enter the menu;
2. Turn the selection dial until "Water Hardness" is displayed;
3. Press the button.
4. Turn the selection dial and set the number of squares measured by the indicator paper (see figure in previous paragraph).
5. Press the button to confirm the setting.
6. Then press the button to exit the menu.

The machine is now reprogrammed with the new water hardness setting.

## WATER SOFTENER FILTER

Some models come supplied with the water softener filter. If this is not the case with your model, we recommend purchasing one from De'Longhi customer assistance.

To use the filter correctly, follow the instructions below.

### Installing the filter

1. Remove the filter from the packaging.
2. Turn the date indicator disk (see fig. 30) until the next two months of use are displayed.






*Please note :*

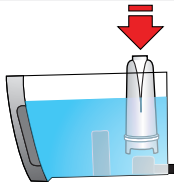
The filter lasts about two months if the appliance is used regularly. If the coffee machine is left unused with the filter installed, it will last a maximum of three weeks.

3. To activate the filter, run tap water through the hole in the filter as shown in the figure until water comes out of the openings at the side for more than a minute (fig. 32).
4. Extract the tank from the appliance and fill with water.
5. Insert the filter in the water tank and immerse it completely for about ten seconds, sloping it to enable the air bubbles to escape (fig. 32).
6. Insert the filter in the filter housing and press as far as it will go.
7. Close the tank with the lid, then put the tank back in the machine.

When you install the filter, you must notify the appliance of its presence.

8. Press the **MENU** button to enter the menu;
9. Turn the selection dial until "Install filter" is displayed;
10. Press the  button.
11. "Enable?" is displayed;
12. Press the  button to confirm the selection. "HOT WATER CONFIRM?" is displayed;
13. Position a container with a minimum capacity of 500ml under the hot water spout.
14. Press the  button to confirm the selection. The appliance begins hot water delivery and the message "Please wait" is displayed.
15. After delivery, the appliance is automatically ready to make the next drink.




The new filter is active and indicated by an asterisk displayed under "Install filter" in the menu. You can now use the appliance.



### Replacing the filter

When "REPLACE FILTER" is displayed, or after two months (see date indicator) or when the appliance has not been used for 3 weeks, you should replace the




filter:

1. Extract the tank and exhausted filter;
2. Take the new filter out of its packet and proceed as illustrated in points 2, 3, 4, 5 and 6 in the previous section.
3. Position a container with a minimum capacity of 500ml.
4. Press the **MENU** button to enter the menu;
5. Turn the selection dial until "Replace filter" is displayed.
6. Press the  button.
7. Confirm?" is displayed.
8. Press the  button to confirm the selection;
9. "HOT WATER Confirm?" is displayed;
10. Press the  button to confirm the selection. The appliance begins hot water delivery and the message "Please wait" is displayed.
11. After delivery, the appliance is automatically ready to make the next drink.

The new filter is now active and you can use the coffee machine.

### Removing the filter

If you want to use the appliance without the filter, you must remove it and notify the appliance of its removal. Proceed as follows:

1. Extract the tank and exhausted filter;
2. Press the **MENU** button to enter the menu;
3. Turn the selection dial until "Install filter" is displayed;
4. Press the  button.
5. "Disable?" is displayed;
6. Press  to confirm and  to exit the menu.

## TECHNICAL DATA

Voltage:	220-240 V ~ 50/60 Hz max. 10A
Absorbed power:	1450W
Pressure:	15 bar
Max. water tank capacity:	1.8 litres
Size: LxHxD:	238x351x430 mm
Cable length:	1,75 m
Weight:	9.1 kg
Max. beans container capacity:	250 g

The appliance complies with the following EC directives:


- EC Regulation 1275/2008 for standby;
- Low Voltage Directive 2006/95/EC and subsequent amendments;
- EMC Directive 2004/108/EC and subsequent amendments;
- Materials and accessories coming into contact with food conform to EC regulation 1935/2004.

## DISPOSAL



In compliance with European directive 2002/96/EC, the appliance must not be disposed of with household waste, but taken to an authorised waste separation and recycling centre.

## DISPLAYED MESSAGES


MESSAGE DISPLAYED	POSSIBLE CAUSE	SOLUTION
FILL TANK	Insufficient water in the tank.	Fill the tank with water and/or insert it correctly, pushing it as far as it will go until it clicks into place (fig. 4).
EMPTY GROUNDS CONTAINER	The grounds container (A14) is full.	Empty the grounds container and drip tray, clean and replace (fig. 23). Important: When removing the drip tray, the grounds container must be emptied, even if it contains few grounds. If this is not done, when you make the next coffees, the grounds container may fill up more than expected and clog the machine.
GROUND TOO FINE ADJUST MILL	The grinding is too fine and the coffee is delivered too slowly or not at all.	Repeat coffee delivery and turn the grinding adjustment dial (fig. 11) one click clockwise towards "7" while the coffee mill is in operation. If after making at least 2 coffees delivery is still too slow, repeat the correction procedure, turning the grinding adjustment dial another click until delivery is correct (see the grinding adjustment section on page 12). If the problem persists, make sure the water tank is fully inserted, press the  button and deliver a little water from the spout.
INSERT GROUNDS CONTAINER	After cleaning, the grounds container has not been replaced.	Remove the drip tray and insert the grounds container.
ADD PRE-GROUND COFFEE	With the pre-ground function selected, pre-ground coffee has not been poured into the funnel.	Add pre-ground coffee in the funnel or deselect the pre-ground function.
DESCALE	The machine must be descaled.	The descaling procedure described in the section "Descaling" needs to be performed as soon as possible (page 16).
LESS COFFEE	Too much coffee has been used.	Select a milder flavour or reduce the quantity of pre-ground coffee.
FILL BEANS CONTAINER	The coffee beans have run out.	Fill the beans container.
	The pre-ground coffee funnel is clogged.	Empty the funnel with the help of a brush as described in the section "Cleaning the pre-ground coffee funnel".
INSERT INFUSER ASSEMBLY	The infuser has not been replaced after cleaning.	Insert the infuser as described in the paragraph "Cleaning the infuser" (page 16).
INSERT TANK	The tank was not inserted properly.	Insert the tank correctly and press as far as it will go.
GENERAL ALARM	The inside of the appliance is very dirty.	Clean the inside of the appliance thoroughly, as described in the section "Cleaning" (page 15). If the message is still displayed after cleaning, contact a service centre.
REPLACE FILTER	The water softener filter is exhausted.	Replace the filter or remove it as described in the section "Water softener filter" (page 18).


EMPTY CIRCUIT FILL CIRCUIT <i>alternating with</i> HOT WATER Confirm?	The water circuit is empty.	Press OK to deliver water from the spout (D5) until it flows out normally.
SET DIAL TO CLEAN	Milk has been delivered recently and the tubes inside the milk container must be cleaned.	Turn the froth adjustment dial to CLEAN.
INSERT WATER SPOUT	The hot water spout is not inserted or is inserted incorrectly.	Insert the water spout (C3) as far as it will go.
INSERT MILK CONTAINER	The milk container is not inserted correctly.	Insert the milk container (fig. 19) as far as it will go.

## TROUBLESHOOTING

Below is a list of some of the possible malfunctions.

If the problem cannot be resolved as described, contact Customer Service.

PROBLEM	POSSIBLE CAUSE	SOLUTION
The coffee is not hot.	The cups were not preheated.	Warm the cups by rinsing them with hot water (please note: you can use the hot water function). Enable the cup warmer, leave the cups at least 20 minutes to warm up.
	The infuser has cooled down because 2/3 minutes have elapsed since the last coffee was made.	Before making coffee, warm the infuser by pressing the button  .
	A low coffee temperature is set.	Set a high coffee temperature in the menu.
The coffee is weak or not creamy enough.	The coffee is ground too coarsely.	Turn the grinding adjustment dial one click anticlockwise towards "1" while the coffee mill is in operation (fig. 11). Continue one click at a time until coffee delivery is satisfactory. The effect is only visible after delivering 2 coffees (see the section: "Adjusting the coffee mill" on page 12).
	The coffee is unsuitable.	Use pre-ground coffee for espresso machines only.

The coffee is delivered too slowly or in drops.	The coffee is ground too finely.	Turn the grinding adjustment dial one click clockwise towards "7" while the coffee mill is in operation (fig. 11). Continue one click at a time until coffee delivery is satisfactory. The effect is only visible after delivering 2 coffees (see the section: "Adjusting the coffee mill" on page 12).
Coffee does not come out of one or both of the spouts.	The spouts are blocked.	Clean the spouts with a toothpick.
The milk does not come out of the milk spout.	The milk container lid is dirty.	Clean the milk container lid as described in the section "Cleaning the milk container".
The milk contains large bubbles and squirts out of the milk spout or there is little froth.	The milk is not cold enough or is not semi-skimmed.	Use skimmed or semi-skimmed milk at refrigerator temperature (about 5° C). If the result is not as you wished, try changing brand of milk.
	The froth adjustment dial is incorrectly adjusted.	Adjust following the instructions in the section "Making drinks with milkcappuccino and milk based drinks".
	The milk container lid or froth adjustment dial are dirty	Clean the milk container lid and dial as described in the section "Cleaning the milk container".
	The hot water/steam nozzle is dirty	Clean the nozzle as described in the section "Cleaning the hot water/steam nozzle".
The appliance does not come on.	It is not plugged into the mains socket.	Plug into the mains socket.
	The connector is not inserted fully in the socket.	Make sure the connector is correctly connected.
	The main switch (A8) is not turned on.	Press the main switch (fig. 1). BEAN TO CUP ESPRESSO AND CAPPUCCINO MACHINE
The infuser cannot be extracted	The appliance has not been turned off correctly	Turn the appliance off by pressing the  button (page 10).

## ELECTRICAL REQUIREMENTS (UK ONLY)

Before using this appliance ensure that the voltage indicated on the product corresponds with the main voltage in your home, if you are in any doubt about your supply contact your local electricity company.

The flexible mains lead is supplied connected to a B.S. 1363 fused plug having a fuse of 13 amp capacity.

Should this plug not fit the socket outlets in your home, it should be cut off and replaced with a suitable plug, following the procedure outlined below.

**Note:** Such a plug cannot be used for any other appliance and should therefore be properly disposed of and not left where children might find it and plug it into a supply socket - with the obvious consequent danger.

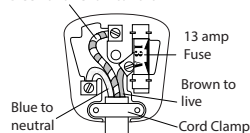
**N.B.** We recommend the use of good quality plugs and wall sockets that can be switched off when the machine is not in use.

**IMPORTANT:** the wires in the mains lead fitted to this appliance are coloured in accordance with the following code:

GREEN AND YELLOW  
BLUE  
BROWN

EARTH  
NEUTRAL  
LIVE

Green and Yellow to Earth



As the colours of the wires in the mains lead of this appliance may not correspond with the coloured markings identifying the terminals in your plug, proceed as follows:

- The wire which is coloured green and yellow must be connected to the terminal in the plug which is marked with the letter E or by the earth symbol or coloured green or green and yellow.
- The wire which is coloured blue must be connected to the terminal which is marked with the letter N or coloured black.
- The wire which is coloured brown must be connected to the terminal which is marked with the letter L or coloured red.

When wiring the plug, ensure that all strands of wire are securely retained in each terminal. Do not forget to tighten the mains lead clamp on the plug. If your electricity supply point has only two pin socket outlets, or if you are in doubt, consult a qualified electrician.

Should the mains lead ever require replacement, it is essential that this operation be carried out by a qualified electrician and should only be replaced with a flexible cord of the same size.

After replacement of a fuse in the plug, the fuse cover must be refitted. If the fuse cover is lost, the plug must not be used until a replacement cover is obtained. The colour of the correct replacement fuse cover is that of the coloured insert in the base of the fuse recess or elsewhere on the plug. Always state this colour when ordering a replacement fuse cover.

Only 13amp replacement fuses which are as approved to B.S. 1362 should be fitted.

This appliance conforms to the Norms EN 55014 regarding the suppression of radio interference.

**Warning - this appliance must be earthed**