



MIGNON ZERO & ZERO BREW



LIBRETTO ISTRUZIONI

USER HANDBOOK

Translation of the Original Instructions



EN

SAFETY INSTRUCTIONS

EN

The producer has reasonably considered every precaution possible, so to assure user's safety. Anyway, in installing and using the grinder, various conditions may create uncontrollable and unpredictable events; so, it's always necessary to evaluate any risks and consider what follows:

- Before connecting the grinder, it's necessary to verify that plate data match with electric net ones.
- Both installation and repair must respect safety instructions and the inforce rules of the country in which the grinder is installed.
- The grounding wire is necessary, like the installation. Both must respect the inforce rules of the country in which the grinder is installed.
- Adaptors, multiple outlets and extension cables are not suggested.
- Do not use this grinder if it is damaged on the cable. If the cable is damaged, it must be replaced by the manufacturer or qualified personnel. In case of malfunctioning, switch off the grinder and take it to the closest authorised service center.
- Do not immerse the grinder, the cable or the plug into water or other liquids. It's necessary to avoid that internal parts enter in contact with other liquids.
- Do not use any water jets, unsuitable detergents or steam-cleaners to clean.
- During its use, install the grinder on a flat and stable surface being able to sustain the weight of the grinder.
- The grinder is intended to be used only to grind roasted coffee beans. A different use is considered unsuitable and dangerous. The producer cannot be considered responsible for possible damages related to misuse or erroneous and unreasonable actions.
- The grinder cannot be used in extreme environmental conditions. In any case, use the grinder just between $-5^{\circ}\text{C} \div +30^{\circ}\text{C}$ degrees.
- For home-use, it is necessary to switch off the grinder and to unplug it before changing any accessory or coming clode to any parts that is working.
- This appliance is intended to be used in household and similar applications such as: staff kitchen areas in shops, offices and other working environments, farm houses, by clients in hotels, motels and other residential type environments, bed and breakfast type enviroments.
- Do not allow children or untrained people to use the grinder.
- The grinder can be used by children being 8 years old or above and by people with reduced physical, sensory or mental capabilities ; by people without adequate experience just when monitored and if these have received user instruction on the grinder. Cleaning cannot be performed by unmonitored children.

IMPORTANT WARNINGS

- Do not pull the cable or the grinder itself to disconnect its power cable.
- Do not use the grinder with wet or damp hands.



-
- Do not use the grinder when you are barefoot.
 - Before cleaning or servicing, unplug the grinder from the electric net.
 - Do not leave the grinder switched on when not necessary. When it is not working, unplug the grinder.
 - Do not obstruct the fan or heat elimination systems. Do not enter any water or liquids.
 - While the grinder is working, do not enter spoons, forks or other utensils in the spout or the coffee container to perform anything.
 - To solve any blockage in the spout, always switch off the grinder before.
 - In case of failure of the motor, switch off the grinder and contact an authorised service center.
 - Prevent the grinder to be used under any weather conditions (sun, rain, ecc.).
 - Children must be monitored to prevent they play with the grinder.
 - The owner is responsible for monitoring the installation of the grinder, so to assure it has been installed in enviromental conditions that will not create a safety or health danger for the users.
 - If you decide not to use anymore this grinder, we suggest to make it inoperative. After having it unplugged, cut the cable. In case of failure, switch it off and do not tamper with.

CONSERVATION OF THE MANUAL

This manual must always be at any user disposal. The user must be informed on the correct use of the grinder and on potential risks. It must be conserved in a dry, clean and heat-protected place. Use the manual so to avoid any damage to itself. Do not remove, rip or write on any manual parts. In case you cannot find the manual, take contact with the re-seller or the producer for further information.

UNPACKING THE GRINDER

- It's necessary to check out that there is not any damage on the grinder, looking at the external packaging
- After having removed the packing, check out there are no damages on the grinder.
- Check out the entirety of all components. In case of defects or damages, inform immediately the authorised reseller.
- The packing (box, cellophane, metallic parts, styrofoam, etc.) can cut, wound or be dangerous if mismanaged. Prevent children or non-responsible people entering in contact with the packing.

- This symbol on the grinder or on the packing informs that the grinder cannot be considered like a usual home waste ; it must be delivered to a suitable waste collection facility that recycle electric and electronic devices. If this grinder is correctly disposed of, you will prevent potential damages to both environment and health; these damages may occur in case the grinder is not correctly disposed of. Waste recycling protects natural sources. For further information on the recycling of this product, you can contact your local authority, local recycling center or the reseller you purchased the grinder from.



IMPORTANCE OF THE MANUAL

This manual is addressed to the user of the grinder and it is considered part of this product. It shares information on its correct use and maintenance, including information on user's safety. This manual must be held during all the grinder's lifespan and must be transmitted to any user or future owner. All information in this manual do not replace safety rules and technical data on the installation and functioning of the grinder and its packing. This manual reflects the nowadays state of the art and it cannot be considered inadequate just because revised on the base of new technologies. The producer may modify the manual without revising previous editions, except in special cases. A misuse of the grinder, or a different use than the one described on the manual, will invalidate any warranty or responsibility of the producer. The grinder can be used just by a responsible adult. It's necessary to preserve the manual, as the producer cannot be held responsible for any damage on people or things, or any damage on the grinder in case it is misused or in case safety and maintenance rules are not respected.

DICHIARAZIONE DI CONFORMITA' CE
EC DECLARATION OF CONFORMITY



CONTI VALERIO S.r.l.

Via Luigi Longo, 39/41 – 50019 Sesto Fiorentino (FI) - ITALY

Dichiariamo sotto la nostra responsabilità, che il prodotto
Declare under our responsibility, that the product:

MACINADOSATORE PER CAFFE' MODELLI:

COFFEE GRINDER MODELS:

SD

VERSIONE /VERSION : 220-240V/50-60Hz; 220V/60Hz

MATRICOLA DAL / SERIAL Nr. FROM : XX XXX 21 04 XXXX

Al quale si riferisce questa dichiarazione, è costruito in conformità alle direttive:

To which this declaration relates, following the provisions of the directives:

Low Voltage Directive (LVD) 2014/35/EU - RED Directive 2014/53/EU - EMC Directive 2014/30/EU

RoHS Directive 2011/65/EU - MD Directive 2006/42/EC - WEEE

Directive 2012/19/EU

Ed è conforme alle normative:

following the provisions of the regulation:

UNI EN 12100/1-2; UNI EN ISO 13857; CEI EN 55014-1/2; CEI EN 61000-3-2/3;

CEI EN 60335-1; CEI EN 60335-2-14; CEI EN 62233; EN 60704-1:1994;

autorizziamo la seguente persona a costituire il fascicolo tecnico:

we authorize the following person to compile the technical file:

Sig. Filippo Conti – Via Luigi Longo, 39/41 – 50019 Sesto Fiorentino (FI) - ITALY

Date : May 2021

The legal representative:

Filippo Conti





DICHIARAZIONE DI CONFORMITA' CE
EC DECLARATION OF CONFORMITY



CONTI VALERIO S.r.l.

Via Luigi Longo, 39/41 – 50019 Sesto Fiorentino (FI) - ITALY

Dichiariamo sotto la nostra responsabilità, che il prodotto
Declare under our responsibility, that the product:

MACINADOSATORE PER CAFFE' MODELLI:

COFFEE GRINDER MODELS:

MIGNON – MEx (x can be: B,E,A,M) - MPy (y can be: B,E,T,A,M)

VERSIONE /VERSION : 220-240V/50-60Hz; 220V/60Hz

EQUIPAGGIATE CON DOSATORE ELETTRONICO

MATRICOLA DAL / SERIAL Nr. FROM : XX XXX 20 40 XXXX

Al quale si riferisce questa dichiarazione, è costruito in conformità alle direttive:

To which this declaration relates, following the provisions of the directives:

Low Voltage Directive (LVD) 2014/35/EU - RED Directive 2014/53/EU - EMC Directive 2014/30/EU

RoHS Directive 2011/65/EU - MD Directive 2006/42/EC - WEEE

Directive 2012/19/EU

Ed è conforme alle normative:

following the provisions of the regulation:

UNI EN 12100/1-2; UNI EN ISO 13857; CEI EN 55014-1/2; CEI EN 61000-3-2/3;

CEI EN 60335-1; CEI EN 60335-2-64; CEI EN 60335-2-14; CEI EN 62233; EN 60704-1:1994;

autorizziamo la seguente persona a costituire il fascicolo tecnico:

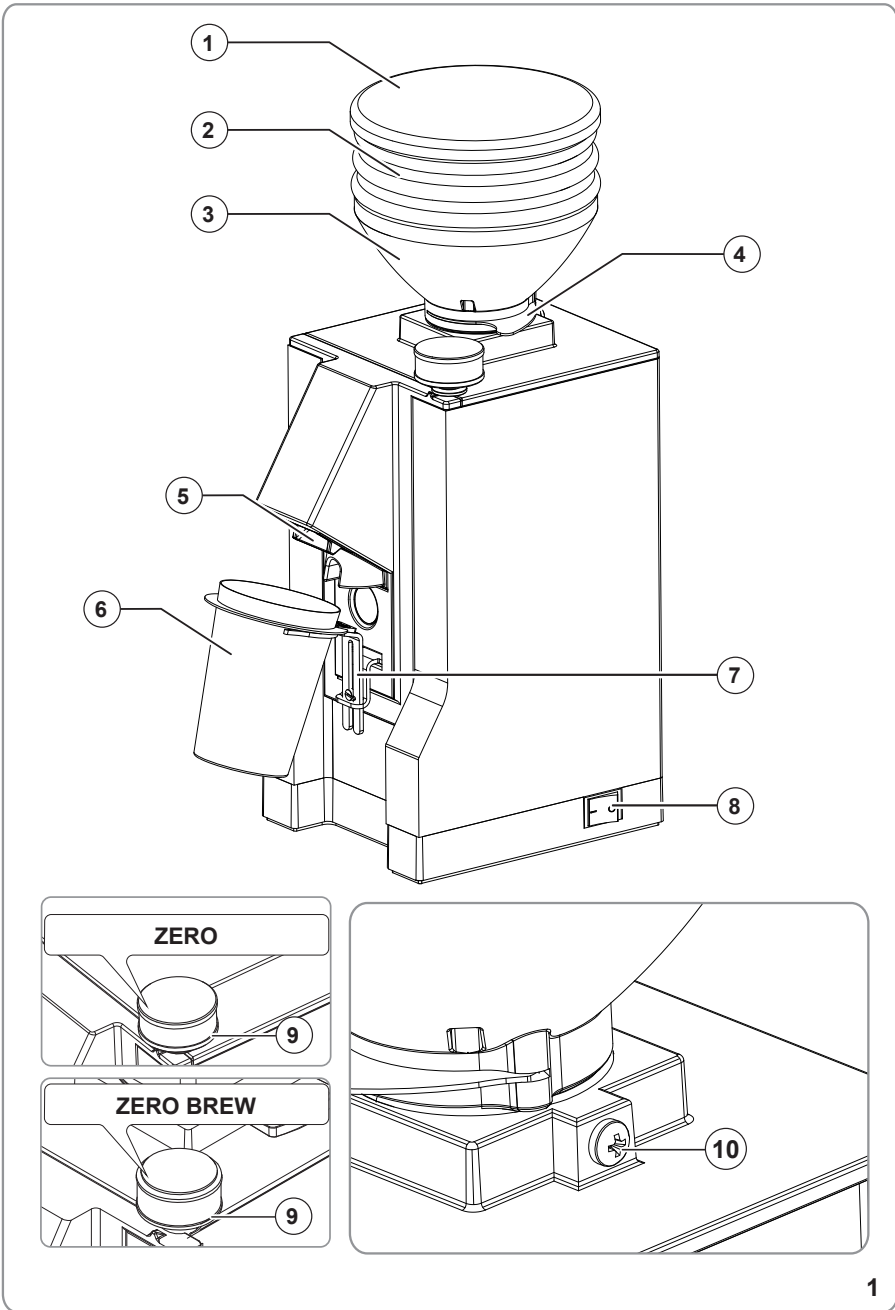
we authorize the following person to compile the technical file:

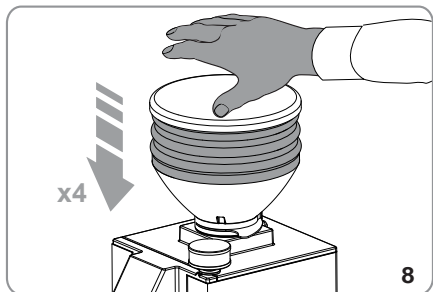
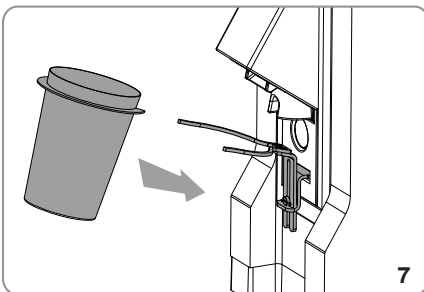
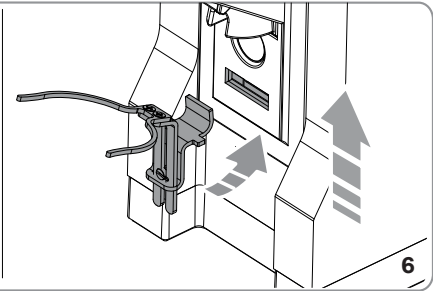
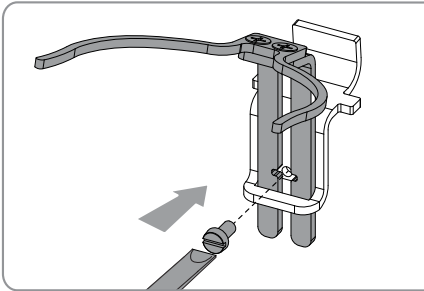
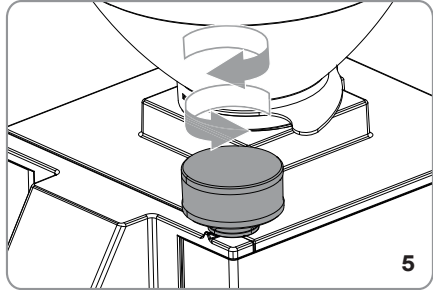
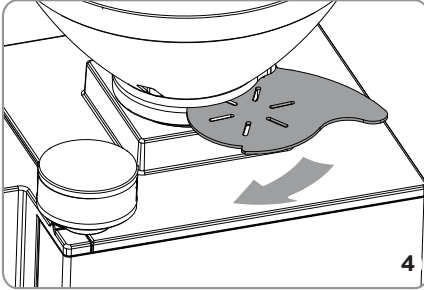
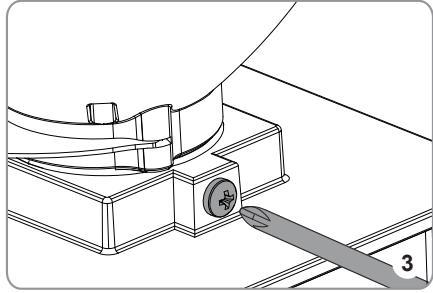
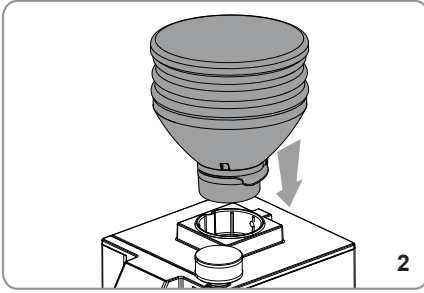
Sig. Filippo Conti – Via Luigi Longo, 39/41 – 50019 Sesto Fiorentino (FI) - ITALY

Date : October 2020

The legal representative:

Filippo Conti







8 GENERAL INFORMATION

MANUFACTURER:

CONTI VALERIO - Via Luigi Longo, 39/41 - 50019 Sesto Fiorentino (FI) – ITALIA

MODEL:

SD - MEA

9 TECHNICAL DATA

	ZERO (SD)	ZERO (MEA)	ZERO BREW (SD)	ZERO BREW (MEA)
Volts (V)	220/240	110/120	220/240	110/120
Frequency (Hz)	50/60	60	50/60	60
Power consumption (W)	320	—	320	—
RPM	1350 (50Hz) 1650 (60Hz)	1650	1350 (50Hz) 1650 (60Hz)	1650
Production rate (g/s)	1,4 - 1,8 (espresso) / 1,9 - 2,5 (brew)			
Empty weight (kg)	5,6			
Hopper capacity (g)	45			
Height (mm)	346			
Width (mm)	120			
Depth (mm)	204			

Ton: 60 s

Toff: 1200 s

10 DESCRIPTION OF THE APPLIANCE

1. Container lid
2. Blow-Up Bellow
3. Coffee bean container
4. Opening / closing tab for coffee bean container
5. Dispensing nozzle
6. Ground coffee container
7. Container holder fork
8. Grinding activation button
9. Grinding adjustment knob
10. Coffee bean container fixing screw

11 LOCKING THE CONTAINER

Before starting operation, install the coffee beans container (2).

- Insert the container (2) in its seat (Fig.2) making sure the hole is aligned with the screw on the back of the appliance.
- Screw in the locking screw (8) (Fig.3).

12 ADJUSTMENTS AND USE

12.1 PRELIMINARY OPERATIONS

Before starting work, the machine must be set up according to the type of coffee blend (roasting level) and grinding degree.

- Select the type of coffee blend (roasting level).
- Select the grinding degree.
- Assemble the fork (7) and install it on the body of the machine (Fig.6).
- After making the electrical connection, turn the tab (4) at the base of the coffee bean container (3) to close it (Fig.4).
- Remove the lid (1) and fill the container (3) with coffee beans.
- Put back the lid (1).

12.2 GRINDING ADJUSTMENT

Rotate the adjustment knob (9) clockwise to make the powder finer, or counter-clockwise to increase its coarseness (Fig.5). The adjustment must be made gradually, grinding a little coffee every 2 notches at the most. If the knob is turned by one full turn with the motor stopped, the machine may stop.

12.3 OPERATION

- Place the container for the ground coffee (6) on the fork (7) under the dispensing nozzle (5) (Fig.7).
- Press the side activation key (8) and after a few moments open the tab (4) allowing the passage of coffee beans.
- After all the coffee beans have been ground, close the tab (4) and press the blow-up bellows (2) 4-5 times to extract all the ground coffee (Fig.8).
- Complete grinding by pressing the side activation button again (8).

ATTENTION

To ensure correct operation of the Blow-Up system, press the bellow (2) with grinding activated and with the tab (4) closed.

ATTENTION

To ensure correct operation of the appliance, avoid grinding more than 160 g of coffee per activation.

13 CLEANING AND MAINTENANCE

ATTENTION

Disconnect the appliance from the power supply before carrying out any cleaning and maintenance operations. Do not pull the power cord or the appliance itself to disconnect the plug from the power supply socket.

ATTENTION

Maintenance and cleaning operations must be carried out by specialized personnel authorized by the manufacturer.

ATTENTION

Do not carry out makeshift or precarious repairs, much less use non-original spare parts.

13.1 CLEANING

Cleaning is a critical aspect for the correct operation of the coffee grinder. A neglected coffee grinder can have a negative impact on coffee brewing and on the accuracy of dosing and grinding. Before cleaning, make sure the appliance is unplugged.

13.2 CLEANING THE HOPPER

After removing the hopper from the machine, wash the inside of the same with water and neutral detergent, removing the oily layer left by the coffee beans. Rinse it and dry it thoroughly. Repeat the process for the plastic lid. Do not wash in the dishwasher. Cleaning is recommended at least once a week.

13.3 CLEANING THE GRINDING SYSTEM

After removing the lid, open the upper grinder holder. Then clean the grinders and other internal parts with a brush or a dry cloth. If necessary, use a vacuum cleaner or a jet of compressed air. After putting back the upper grinder holder and the lid, insert the hopper. For complete sanitation, use commercially available detergent tablets for coffee grinders.



ATTENTION

All cleaning and sanitising operations must be carried out with products approved for use with food.

13.4 MAINTENANCE

Check, and if necessary replace, the grinders every 300 kg of coffee. To carry out maintenance on the grinders, disconnect the appliance from the power supply and remove the bean container. Remove the rear shield and unscrew the screw hidden behind to remove the lid. Next, unscrew the underlying screws that secure the upper grinder holder. To clean the grinders, use a brush or a dry cloth; if necessary use a vacuum cleaner or a jet of compressed air.



ATTENTION

Maintenance must only be carried out by specialized personnel authorized by the manufacturer.



ATTENTION

Do not carry out makeshift or precarious repairs, much less use non-original spare parts.

14 TROUBLESHOOTING

Contact the specialized personnel.



A series of horizontal lines for writing, consisting of a solid top line, a dashed middle line, and a solid bottom line. There are 20 such rows on the page.



A series of horizontal dotted lines for writing, spanning the width of the page.

ME053-5-5A-A0-R00
01-2022



CONTI VALERIO S.R.L.

Via Luigi Longo 39/41 - 50019 Sesto Fiorentino (FI) - ITALY