

## **0. INTRODUCTION**

### **0.1. IMPORTANT INFORMATION**

This manual is designed for use by the user of the machine and/or by those performing maintenance on the machine and must be considered an integral part of the machine itself.

This manual provides information concerning correct use and appropriate maintenance of the machine, as well as useful indications for ensuring user safety.

This manual must be preserved for the entire working life of the machine and must be transferred, together with the machine, to future users or owners.

The information contained in this manual must not be construed as substituting the safety prescriptions and the technical data regarding installation and operation carried on the machine itself and on the packing materials.

This manual reflects the current state of machine technology and shall not be considered obsolete solely because updated at a later date on the basis of acquired experience.

The manufacturer reserves the right to make modifications to this manual with no obligation to update previous versions except in exceptional cases.

Improper use of the machine or use in manners other than those described in this manual shall invalidate the guarantee conditions and shall release the manufacturer from all responsibility; the machine must be used only by adult, responsible persons.

This manual must be preserved with care: the manufacturer declines all responsibility for damages to persons or things or to the machine itself deriving from improper use or use in manners other than those described herein or in the case the maintenance and safety precautions described herein are not respected.

### **0.2. PRESERVATION OF THE MANUAL**

This manual must at all times be available to the machine user and/or the persons performing maintenance on the machine, who must be provided with full information regarding correct machine use and residual risks.

This manual must be preserved in a clean, dry place away from sources of heat.

This manual must be used in a manner such as not to damage any part of its contents.

Do not remove, tear out or re-write any part of this manual for any reason. In case of loss of this manual or for further information, please contact your area retailer or the manufacturer.

## 1. GENERAL INFORMATION

### 1.1. MANUFACTURER AND MACHINE DATA

**MANUFACTURER:** NUOVA SIMONELLI,  
Belforte del Chienti (MC) - Italy  
Via M. D'Antegiano, 6  
Tel. +39 0733 9501 - Fax +39 0733 950242

**GRINDER/DISPENSER, MODELS:**  
AMM-AMMT MODEL



## 2. TECHNICAL DATA

### 2.1. TECHNICAL DATA

### 2.2. APPLICATIONS AND USE

The grinder/dispenser must be used only for the application for which it was designed; that is, grinding roasted coffee beans. Any other use must be considered improper and therefore dangerous.

The manufacturer shall not be held responsible for damages deriving from improper, erroneous or unreasonable use of the machine.

The machine must be used only by adult persons; children and irresponsible persons should not be allowed to operate the machine.

The machine is not designed for use in extreme environmental conditions and in any case at temperatures outside the -5°C to +50°C range.

The user must respect the general safety regulations in force in the country in which the machine is installed as well as the rules of common sense, and shall be respon-

	Famiglia AMM-AMMT
Voltaggio Volts / Spannung Tension	115-250
Assorbimento (W) Power / Leistungsaufnahme Puissance absorbée	220
Giri al minuto (rpm) RPM / Umdrehungen pro minute Vitesse rotation	1350
Produttività (kg/h) Production rate / Productivität Production	3,6
Peso a vuoto (kg) Empty weight / Leergewicht Poids à vide	Kg 3,6
Altezza (mm) Height / Höhe Hauteur	420
Larghezza (mm) Width / Breite Largeur	140
Profondità (mm) Depth / Tiefe Profondeur	210
Rumorosità (dBA) Noise factor / Geräusch Niveau de bruit	73

---

sible for ensuring that periodic machine maintenance is correctly performed.

The persons installing and using the machine and performing machine maintenance shall inform the manufacturer of any defects or damages due to wear that might jeopardize the original safety features of the machine.

The installer shall be responsible for checking that the machine is installed in tolerable environmental conditions such as to not to create health or safety hazards for those using the machine.

Any responsibility deriving from components manufactured by third parties and installed on the machine shall be assumed by the respective manufacturers; responsibility attributable to the persons authorized to use the machine shall be assumed by the customer.

The machine is designed for 24-hour intermittent service. The machine components are designed and built to ensure at least 1000 hours' operation.

Good cleaning and maintenance also contribute to determining long machine life.

## **2.3. BASIC SAFETY PRECAUTIONS**

Never touch the machine with damp or wet hands.

Never use the machine when barefoot.

Never attempt to unplug the machine by pulling the power cord or the machine itself.

Do not expose the machine to atmospheric agents (sun, rain, etc.).

Never allow the machine to be used by children or by irresponsible persons.

Always unplug the machine from the power supply before performing any cleaning or maintenance operations.

Do not use jets of water or detergents for cleaning.

In the case of machine breakdown or malfunction, switch the machine off and do not tamper with it. For repairs contact only an authorized service center and request use of original spare parts.

Non-observance of the above precautions may make the machine unsafe for future use.

Do not leave the machine switched on when not in use. Unplug the machine when not in use.

Do not obstruct the ventilation and/or heat dissipation openings and/or slits nor introduce water or any other liquids into same.

Replace the power cord immediately if damaged.

Do not introduce spoons, forks or other utensils into the coffee bean container for any reason while the machine is running.

Do not immerse the base containing the motor or the body of the machine in water.

When moving or handling the machine, never grip it by the coffee bean container; before handling the machine, check that the container is firmly fixed to the body of the machine.

Never leave the motor running with the container empty.

Should a foreign body stop the motor, switch the machine off immediately and contact an authorized service center.

---

**WARNING**

Those machines are equipped with device which protects the motor from overheating. When this device is engaged, do not attempt to operate the machine: isolate the machine from the power supply and eliminate the cause of the trouble before re-starting.

## **3. INSTALLATION**

### **3.1. PRECAUTIONS AND SAFETY FEATURES**

Machine design has taken into account all reasonable user safety precautions; nevertheless, particular conditions of installation and/or handling may create unforeseen situations beyond the installer's control which will require case-by-case evaluation of residual risks. We recommend keeping the following in mind:

- Always handle the machine with care to avoid the danger of its falling.
  - The packing materials (carton, cellophane, staples, polystyrene, etc.) can cut, wound or create hazards if used improperly or handled carelessly. Store such materials out of reach of children and irresponsible persons.
  - All defects and/or anomalous machine behavior should be reported immediately to authorized installation and/or maintenance personnel.
  - Before connecting the machine, check that electrical power supply corresponds to the specifications on the data plate.
  - Should the machine plug not be compatible with your socket, have the plug replaced with a suitable type by a qualified technician, who should also check that the section of the wires supplying the power outlet is suitable for the machine power requirements.
- Avoid use of multiple-plug adapters and extension cords.
- The ground wire must be connected; the electrical system must meet the standards set by local safety laws and regulations.
  - Avoid extension cords and makeshift connections.
  - The machine must be installed only by authorized, qualified personnel.
  - Check that the machine components have suffered no damage during shipping; in the case defects or anomalies are found, interrupt installation and request replacement.

## 4. START-UP

### 4.1. INSTRUCTIONS FOR USE

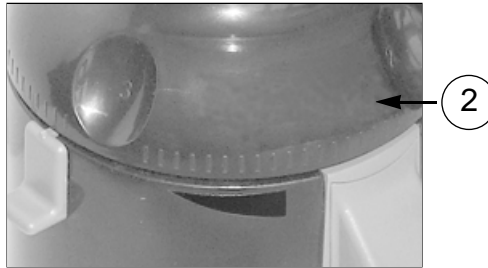
After having connected the machine to the electrical supply, remove the container cover (1) and fill the container with coffee beans.



---

## 4.2. GRINDING SETTINGS

To adjust the grind, turn the adjustment (2) knob clockwise for more finely ground coffee and counterclockwise for a coarser grind, as indicated on the knob itself.

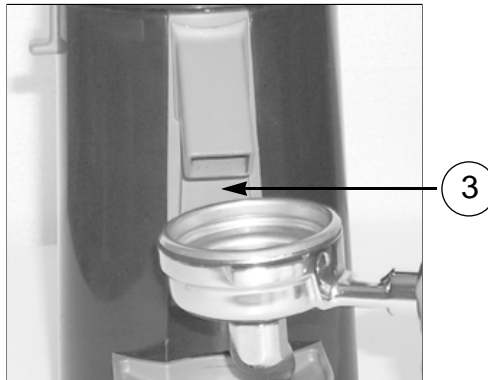


## 4.3. DOSE SUPPLY

To have a portion of coffee powder put the empty filter holder under the pouring unit and in the meanwhile push the button (3).

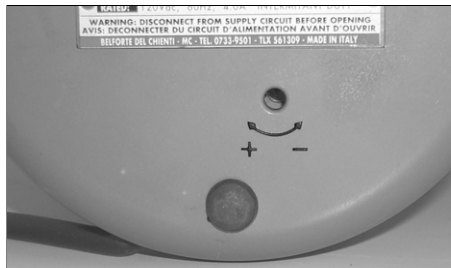
AMM Version: The supply of coffee powder stops by releasing the button.

AMMT Version: The supply of coffee powder stops automatically according to the time programmed.



## 4.4. COFFEE SUPPLY PROGRAMMING (only for AMMT Version)

Regulations occurs by operating on the appropriate screw situated on the base of the grinder.



## **5. CLEANING AND MAINTENANCE**

### **5.1. SAFETY PRECAUTIONS**

WARNING: ISOLATE THE MACHINE FROM POWER SUPPLY before performing any cleaning or maintenance operations.

Do not pull on the power cord or on the machine itself to remove the plug from the electrical socket.

### **5.2. CLEANING**

At least once weekly, use a clean cloth to remove from the bean container the oily residue left by the coffee beans. Clean the dispenser using a brush and if necessary a clean cloth. If the oily coffee bean residue is not removed it may turn rancid and may negatively affect the quality of the coffee ground in the machine.

Clean the base of the machine with a damp cloth.

### **5.3. MAINTENANCE**

WARNING: ISOLATE THE MACHINE FROM POWER SUPPLY before performing any cleaning or maintenance operations.

Maintenance should be performed only by specialized personnel authorized by the manufacturer. Do not attempt to perform makeshift or temporary repairs; use only manufacturer's original spare parts.

For good machine operation, the flat grinding blades should be replaced after grinding 400/500 kg of coffee.

## **6. RETIRING THE MACHINE**

When the machine is no longer used, we recommend rendering it inoperable by cutting the power cord after unplugging.

We also recommend rendering harmless those parts of the machine which might constitute a hazard.

Store the machine in a suitable storage area, out of reach of children and/or irresponsible persons.

To dispose of the machine deliver it to an authorized waste collection center.

Dispose of the machine correctly.